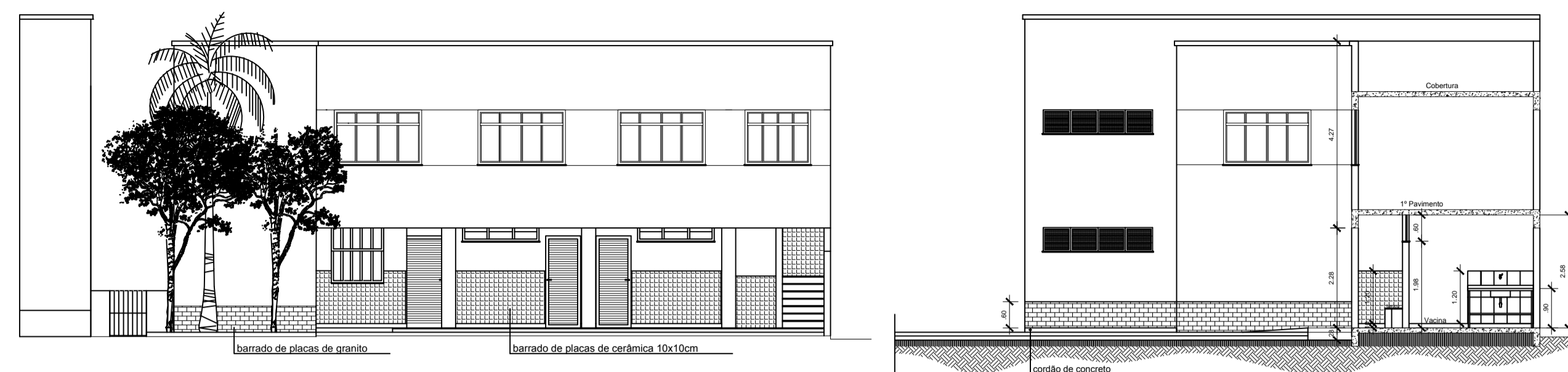
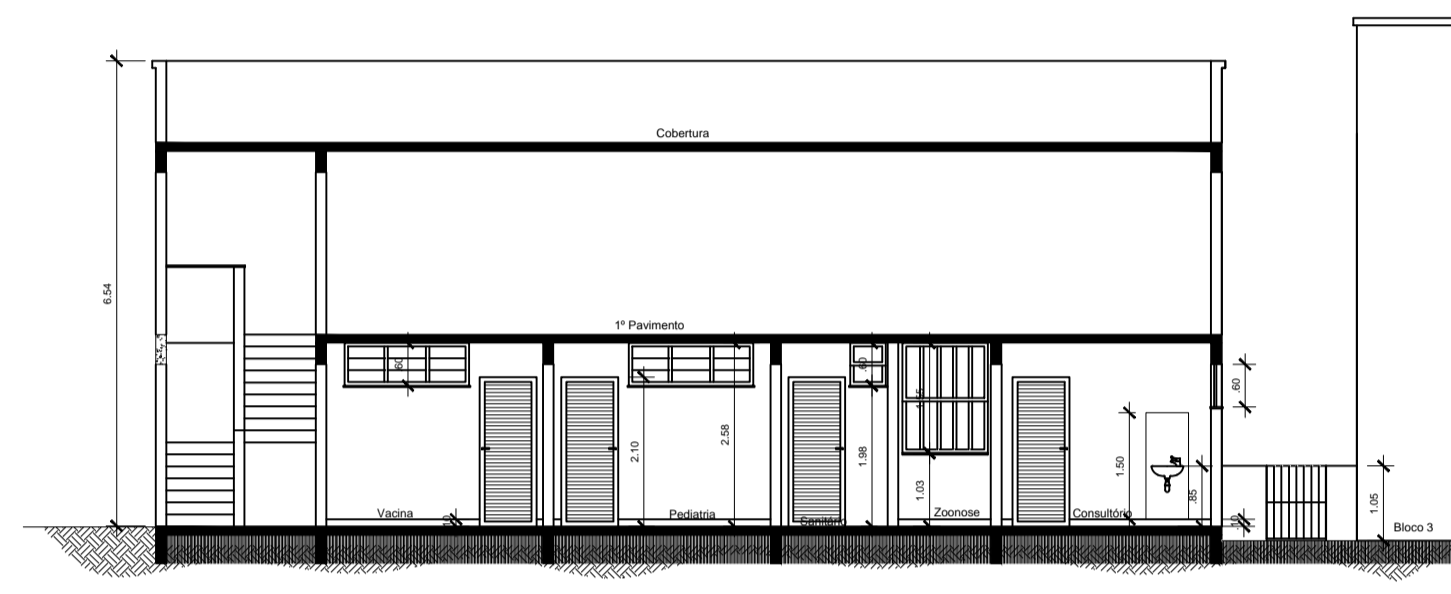


BLOCO 1



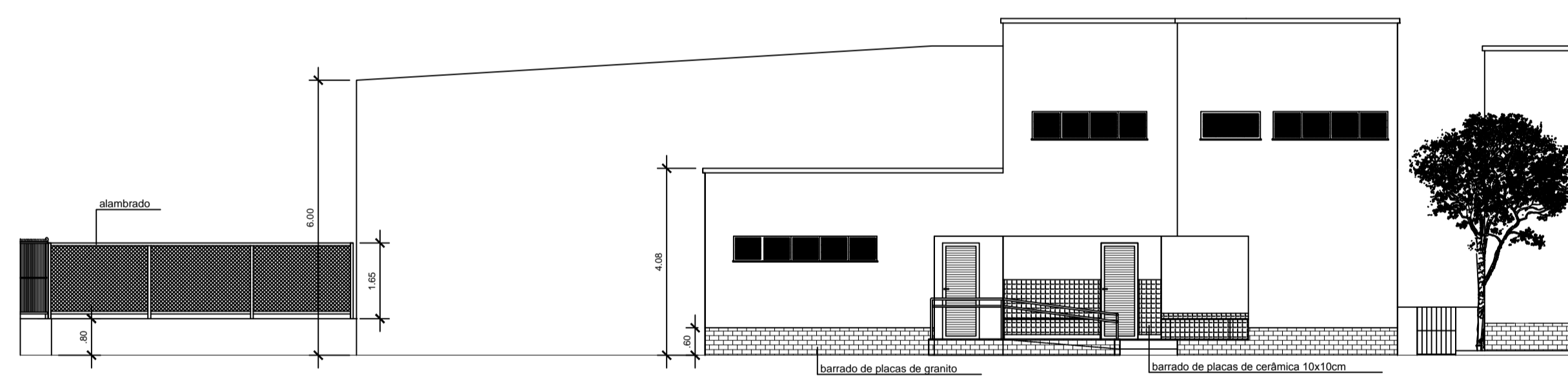
BLOCO 1: FACHADA
ESCALA 1:100

BLOCO 1: CORTE D
ESCALA 1:100



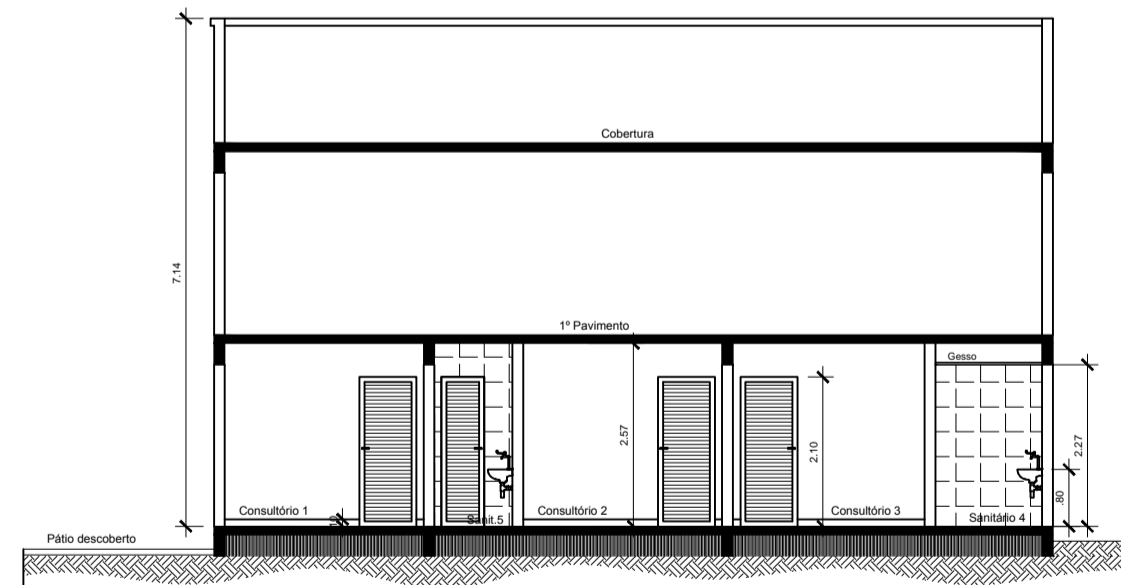
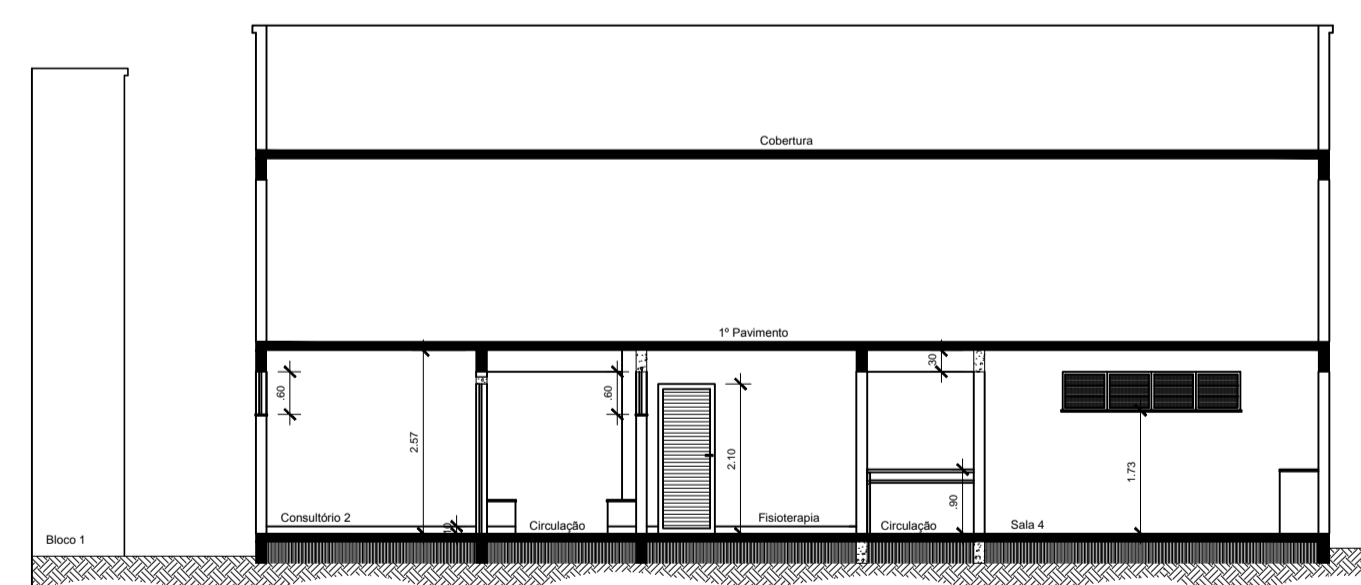
BLOCO 1: CORTE C
ESCALA 1:100

BLOCO 3

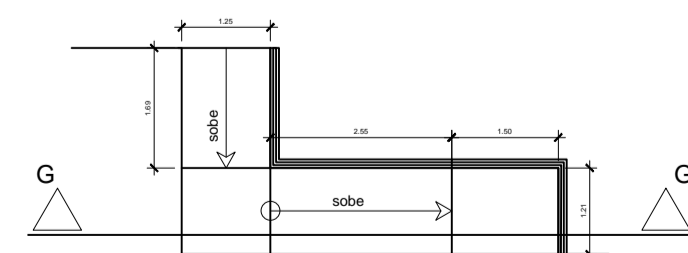


BLOCO 3: FACHADA
ESCALA 1:100

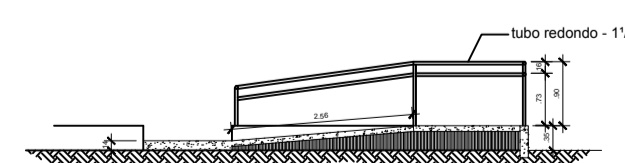
BLOCO 3: CORTE E
ESCALA 1:100



BLOCO 3: CORTE F
ESCALA 1:100

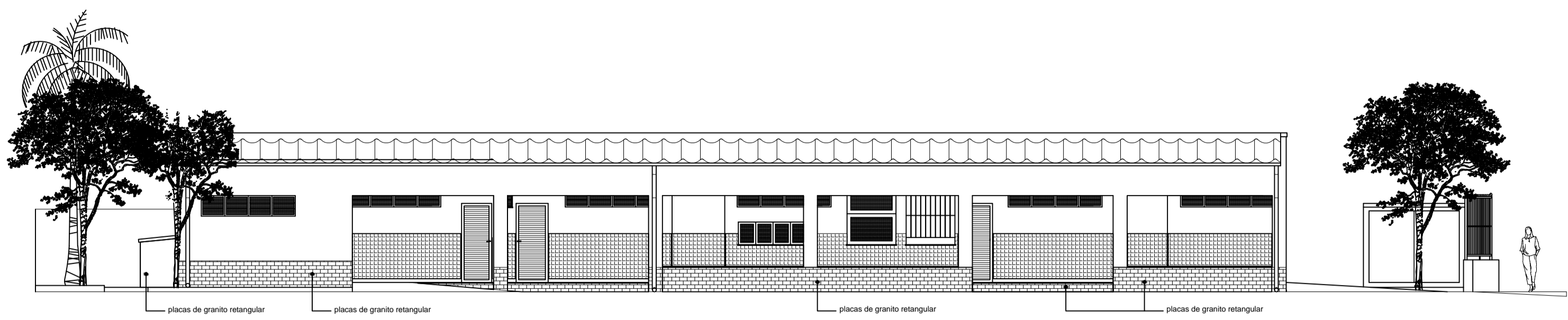


BLOCO 3: CORTE ESCADA
ESCALA 1:100

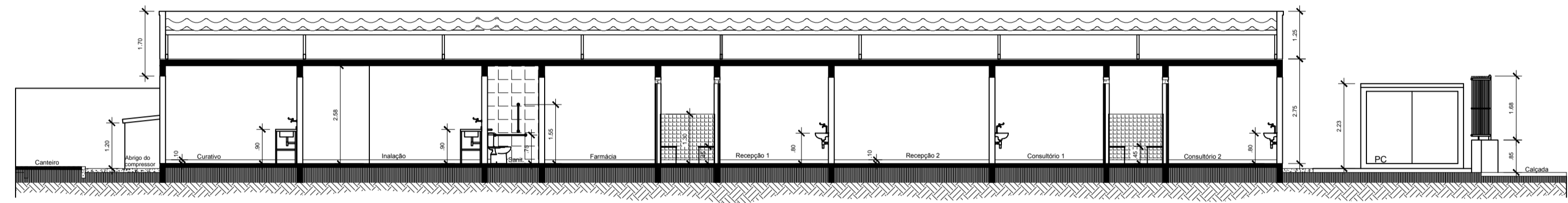


BLOCO 3: DET. RAMPA
ESCALA 1:100

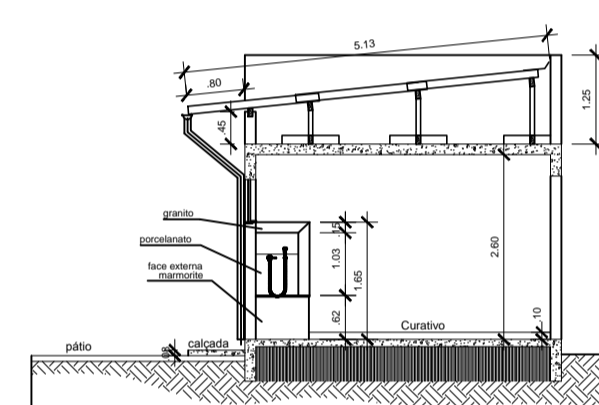
BLOCO 4



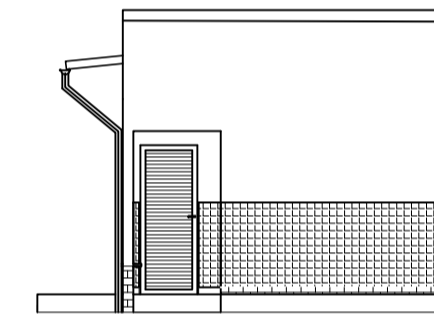
BLOCO 4: FACHADA
ESCALA 1:100



BLOCO 4: CORTE A
ESCALA 1:100

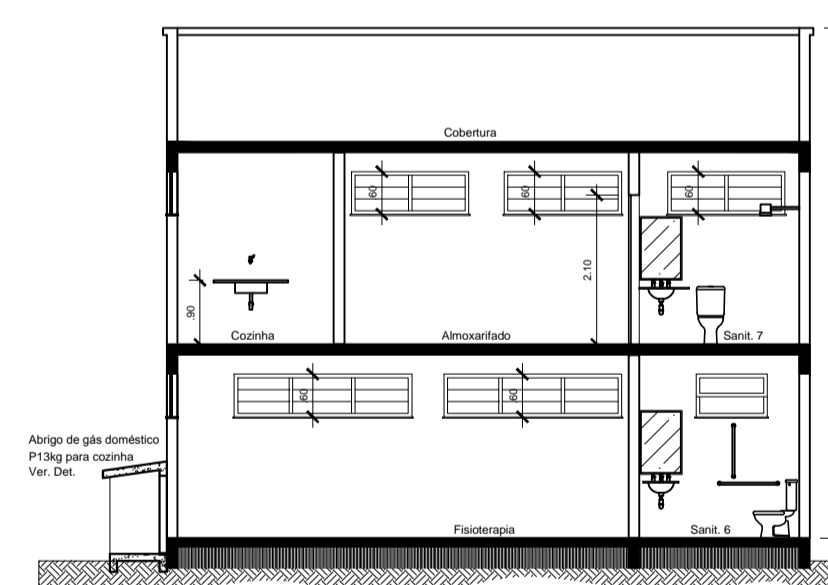


BLOCO 4: CORTE B
ESCALA 1:100

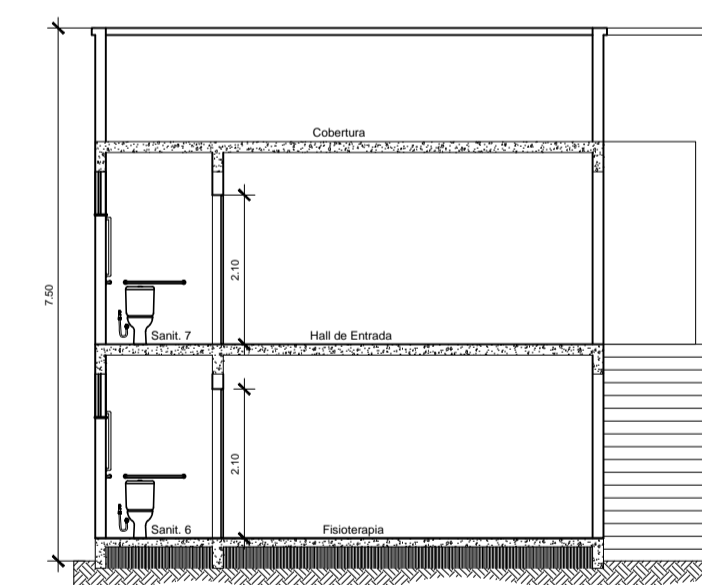


BLOCO 4: FACHADA LATERAL
ESCALA 1:100

BLOCO 2



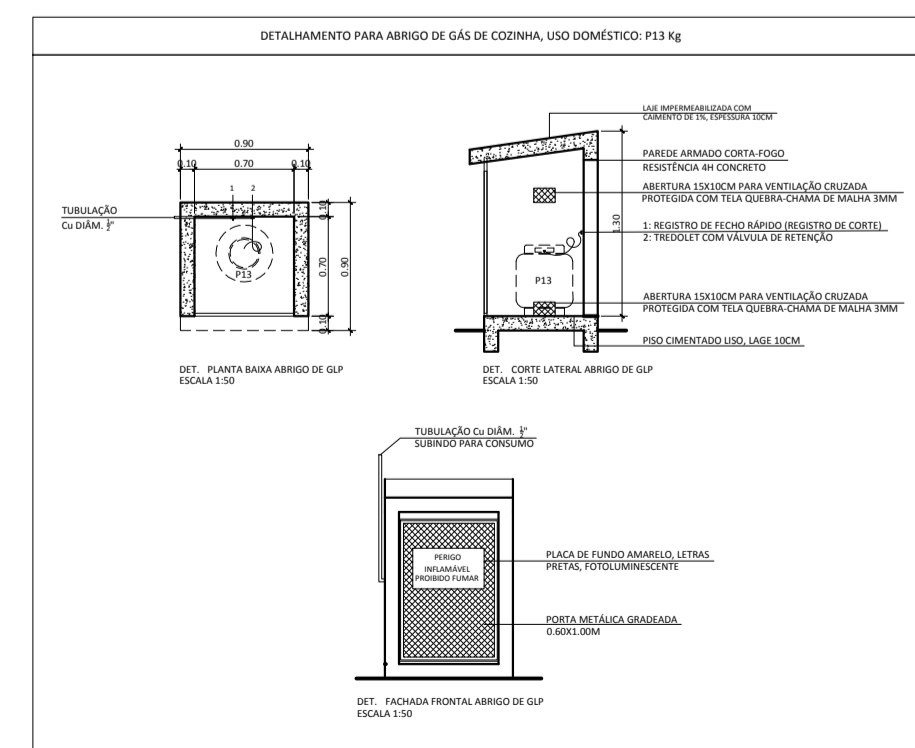
BLOCO 2: CORTE G
ESCALA 1:100



BLOCO 2: CORTE H
ESCALA 1:100



BLOCO 2: FACHADA
ESCALA 1:100



PROJETO DE SEGURANÇA CONTRA INCÊNDIO E PÂNICO

CARTÃO DE IDENTIFICAÇÃO		Folha 3/3
CBMERJ		CORTES E FACHADAS
PROJETO PARA APROVAÇÃO NO CORPO DE BOMBEIROS UNIDADE DE SAÚDE - ATIVIDADE: HOSPITALAR		LOCALIZAÇÃO
LOCALIZAÇÃO: RUA MAJOR JOSÉ BENTO, Nº 1889, VILA BRÍGIDA / VILA NOVA, BARRA MANSA - RJ. CEP: 27.321-001		
PROPRIETÁRIO: PREFEITURA MUNICIPAL DE BARRA MANSA CNPJ: 28.695.658/0001-84		
ÁREA DO TERRENO 962,58 m ² BLOCO 01: 77,62 + 77,62 = 155,24 m ² BLOCO 02: 75,00 + 75,00 = 150 m ² BLOCO 03: 175,09 + 140,00 = 315,09 m ² BLOCO 04: 133,68 + 0 = 133,68 m ² ATC: 754,01 m ²		

PROJETO DE ARQUITETURA: ARQ.ª VALÉRIA V. M. CAMARGO CAU/BR: A11074-4

PROJETO DE SEGURANÇA ARQ.ª E ENG.ª SEG. ROSÁLIA REIS CAU-BR: A92800-3 / CBMERJ: 01-429

PROPRIETÁRIO: PREFEITURA MUNICIPAL DE BARRA MANSA

Escala:	Data:	Rev:
INDICADA	AGO2019	02

CBMERJ / DGST